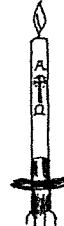
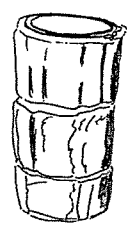


YOUR NAME _____ Start the trail at the grey arrow going into the South Porch.
Follow the numbers from 1-14. Some numbers are on the plan to help you.

<p>1 CROSSES</p> <p>Come into the Church. Look ahead at the Big Hanging Wooden Cross. Does it have any marking or figure on it?</p> <p>yes <input type="checkbox"/> no <input type="checkbox"/></p> <p>Walk around the church, when you see other crosses (not on the kneelers) mark them on the plan. Count them at the end.</p> <p>Number of crosses <input style="width: 100px;" type="text"/></p>	<p>7 PASCHAL CANDLE</p> <p>Go to 7 and look at the Paschal Candle. You can see these letters</p> <p>Alpha A Omega Ω</p> <p>Write the date which is on the Candle.</p> <p><input style="width: 100px;" type="text"/></p> 
--	---

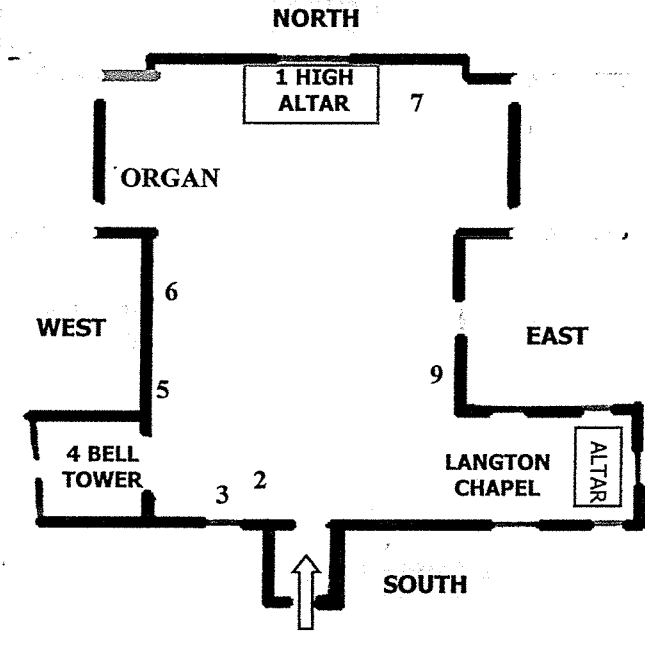
2 FONT

Find the **Font**. Mark it on your plan with an **F**. What is the base made of?



What is put into the font at baptisms when someone is made a member of the church?

W _____



6 MEMORIALS

At 6, look at the **Brass Memorials** on the wall.

Two are in memory of past Rectors here. Look at the memorial of John Ellerton. What did he write?

What do the initials RIP stand for?

3 LEADED GLASS

Look behind the Font at the **Window**. What animals can you see in the lead pictures in the window?

Draw one of them here.

4 BELL TOWER

Look into the **Bell Tower** at 4. How many bell ropes are there?

Look up at the window behind the ropes at the picture of **the bellringers**. What has happened to one of them?

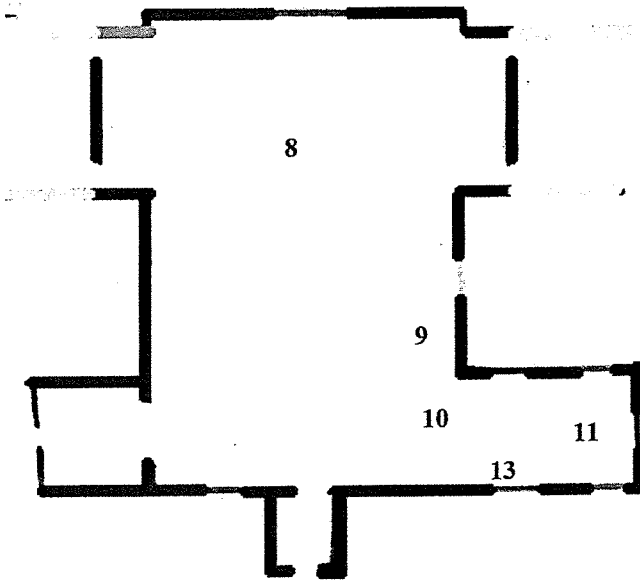
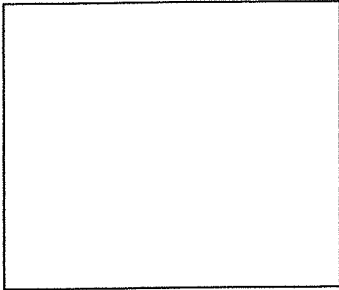
5 WOODEN NOTICE BOARD

Go to 5. Find the large **Wooden Notice Board** on the wall with the names of the Ministers and Rectors of this church. What is the date of the first Rector?

How many rectors have the same name?

8 HIGH ALTAR

Look at the **Altar** at 8. It is a Holy Table. Mark it on the plan using the letter **A**.
 Look at the **Kneelers** in front of the **Altar Rail**. Draw the picture on your favourite kneeler here.



9 MEMORIAL

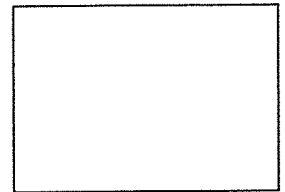
Find this **Brass Plate** to Eliza Ann Beale who set up a school in Barnes.



Tick which symbols you can see in the brass.



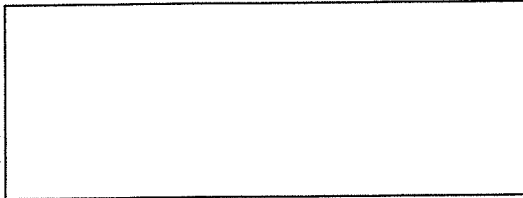
Draw the fourth symbol.



What is the fourth symbol called?

10 LANGTON CHAPEL

Go to 10. This is the **Langton Chapel**, one of the oldest parts of the church. Why do you think that the oval monument is black and damaged?

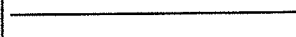


11 COLOURED FLOOR TILES

At 11 there are coloured **Floor Tiles** around the Altar. Find these lilies.



Where can you see more of them?



12 ANGELS

At the top of the walls of the Chapel are four stone **Angels**.

Here is an unfinished drawing of one of them.

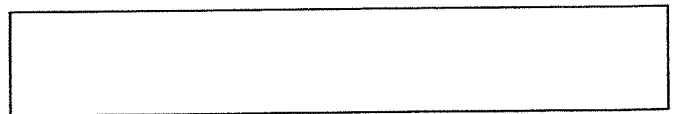
Show a completed angel.



13 CHAPEL WINDOW

Find the **Window** marked **13** on the plan. There are two pictures in the glass.

How many people can you see here at the table at the Last Supper?



14 YOUR THOUGHTS

You have almost finished the Church trail. Well done! Before you go, sit quietly near the back of the church. Think about all the people who have visited the church for hundreds of years. Look all round you. Write two words to describe your feelings about this building.

